

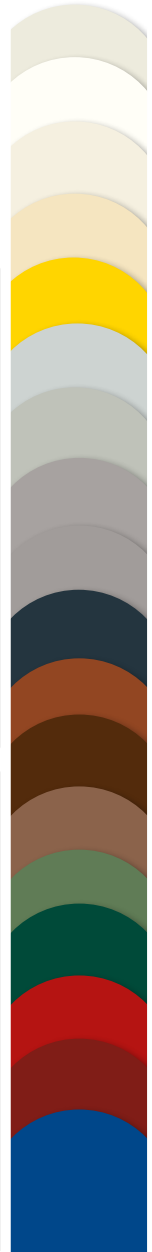


BRUCHA

▶ HABA-Universal 100

The versatile insulated
hinged door for warehouses

NEW



- ▶ Perfect insulation PU
3 15/16 inches
- ▶ Measurements:
39 3/8 x 78 3/4 inches or
47 1/4 x 86 5/8 inches
- ▶ Door leaf available in all
BRUCHA colors,
Frame in Anthracite Grey (RAL 7016)

BRUCHA[®]

Panels that Connect

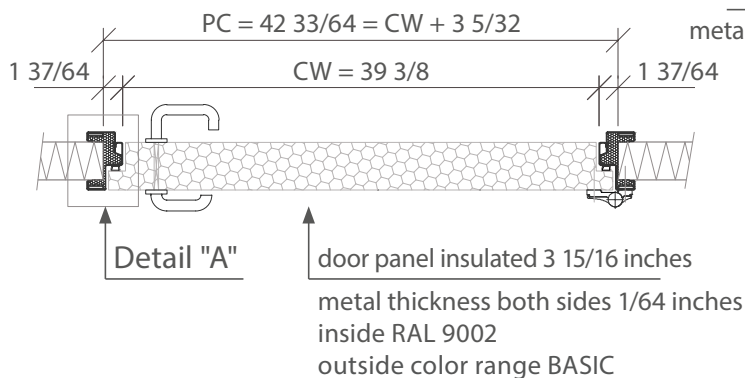
BRUCHA HABA-Universal 100



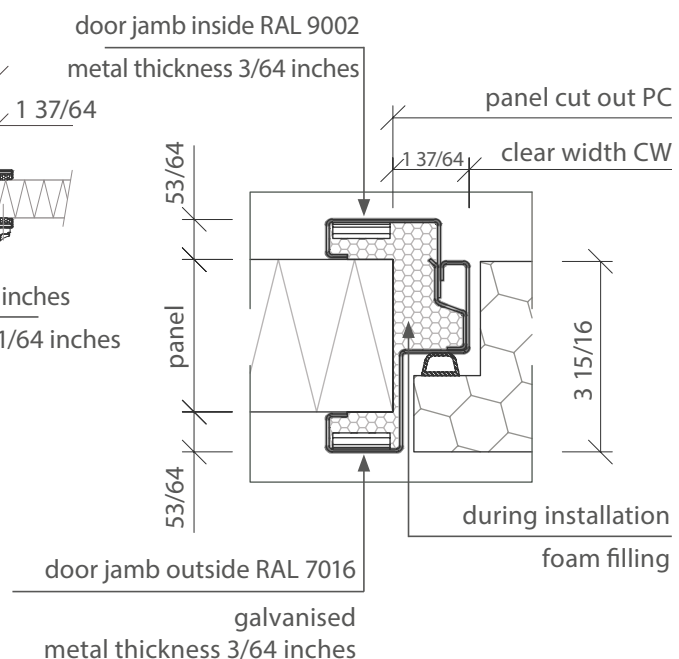
Specifications:

	NAME	BRUCHA HABA-Universal 100 - insulated hinged door
DOOR PANEL	R-Value	31.5
	Door panel thickness	3 5/16 inches
	Insulating core	Pressure filled with rigid polyurethane foam, securely attached to the steel sheet
	Seal	Food safe seal on 3 sides sweeping seal on base available
	Door panel surface outside and inside	Galvanized steel sheet, both sides 1/4 inches outside color group BASIC, inside color Grey White (RAL 9002)
HINGE / HANDLES / FRAMES	Flush mounted frame	Panel assembly 3 5/32 to 7 7/8 inches, reveal industrial rib 1/16 inches galvanized steel, outside Anthracite Grey (RAL 7016), inside Grey White (RAL 9002)
	Door size	Inside dimensions 39 3/8 x 78 3/4 inches or 47 1/4 x 86 5/8 inches
	Door handle	Aluminium handle, handle or button (protective plate) + standard lock
	Hinges type	Aluminium, A901 burglary-resistant
	Door stop	Door hinge left/right
	Door threshold	Finished floor
	Emergency release	Optional

CUT A-A



Detail "A"



www.bruchaamerica.com



typsetting and print errors excepted